

# MS202

**SNOWXTRA**

**MUDXTRA**



E-2 / G-2 / L-2

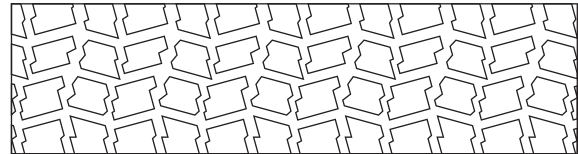
The aggressive, self-cleaning tread design provides excellent traction in tough, demanding & winter/snow applications.

- Wear & Cut resistant tread compound
- Self-cleaning tread
- Superior winter traction
- Suitable for loaders and articulated dumpers
- Excellent traction & floatation
- Reduced vibration & improved stability

Applications



Footprint



Size	Load Index & Speed Symbol	Star Rating	Type	Rim	Unit	Tire Dimensions		
						Tread Depth	Section Width	Overall Diameter
14.00R24	157B / 153A8 / 175A2	*	TL	10.00VA	in.	29/32	15.3	53.5
					mm	23	388	1360
17.5R25	167B / 153A8 / 182A2	**	TL	14.00/1.5	in.	35/32	17.7	52.7
					mm	28	449	1339
20.5R25	177B / 161A8 / 193A2	**	TL	17.00/2.0	in.	37/32	20.3	58.7
					mm	30	516	1491
23.5R25	185B / 170A8 / 201A2	**	TL	19.50/2.5	in.	41/32	23.5	63.5
					mm	33	596	1613
26.5R25	193B / 209A2	**	TL	22.00/3.0	in.	45/32	26.7	68.8
					mm	36	679	1748