

MS300

E-3 / G-3 / L-3

The aggressive, self-cleaning tread design provides excellent traction in tough, demanding applications.

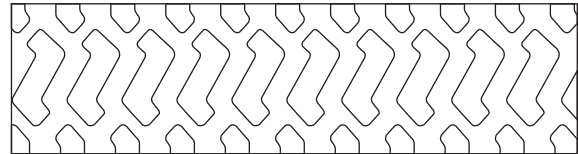
- Wear & Cut resistant tread compound
- Self-cleaning tread
- Superior traction
- Suitable for loaders and articulated dumpers
- Excellent traction & floatation
- Reduced vibration & improved stability



Applications



Footprint



Size	Load Index & Speed Symbol	Star Rating	Type	Rim	Unit	Tire Dimensions		
						Tread Depth	Section Width	Overall Diameter
15.5R25	160B / 176A2	**	TL	12.00/1.3	in.	30/32	15.3	50.2
					mm	24	389	1274
17.5R25	167B / 182A2	**	TL	14.00/1.5	in.	32/32	17.3	53.0
					mm	25.5	440	1346
20.5R25	177B / 193A2	**	TL	17.00/2.0	in.	36/32	20.6	58.8
					mm	28.5	524	1493
23.5R25	185B / 201A2	**	TL	19.50/2.5	in.	40/32	23.7	63.2
					mm	31.5	601	1605
26.5R25	193B / 209A2	**	TL	22.00/3.0	in.	44/32	26.3	68.5
					mm	35	669	1739
29.5R25	200B / 216A2	**	TL	25.00/3.5	in.	48/32	29.6	73.5
					mm	38	751	1866