

MS402

E-4

The self-cleaning deep E4 tread design provides excellent wear resistance in tough, rigid dump truck applications.

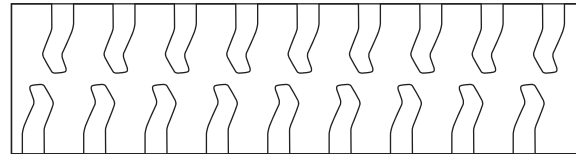
- Reduced wheel spin & improved traction
- Excellent resistance to damage and cuts
- Longer tire life
- Off Road tread design
- Improved operator comfort
- Self-cleaning tread
- Low road noise and reduced vibration



Applications



Footprint



Size	Load Index & Speed Symbol	Star Rating	Type	Rim	Unit	Tire Dimensions		
						Tread Depth	Section Width	Overall Diameter
18.00R33	191B	**	TL	13.00/2.5	in.	66/32	20.1	73.8
					mm	52	511	1874
24.00R35	209B	**	TL	17.00/3.5	in.	71/32	27.8	86.5
					mm	57	705	2196
27.00R49	223B	**	TL	19.50/4.0	in.	86/32	29.0	106.4
					mm	68	737	2702