

MS705 TR

Solid Skid Steer - Construction PRO

Premium three stage solid construction tire.

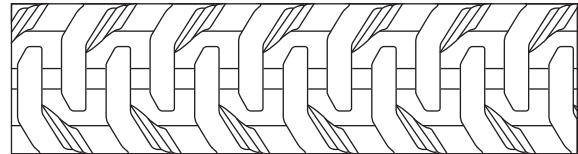


- Zero maintenance solid construction
 - No flats due to punctures or sidewall damage
 - No need to check air pressure
- Extra deep tread allows for 3 to 5 times longer tire life vs pneumatic
- Ultra wear & cut resistant tread compound
- Heat resistant, cushion center compound
- Self-cleaning R4 tread pattern designed for maximum chunk resistance
- Aperture (AP) sidewall configuration provides softer ride
- Ideal for the most extreme OTR and construction applications

Applications



Footprint



Size	Sidewall	Rim	Load Index	Load Capacity (lbs / kg)		Unit	Tire Dimensions		
				5 mph 10 km/h	10 mph 15 km/h		Tread Depth	Section Width	Overall Diameter
31x10-20 (10-16.5)	ST	7.5x20	152A2	7850	5690	in.	1.7	10.0	31.0
				3550	2575	mm	43	254	787
31x10-20 (10-16.5)	AP	7.5x20	148A2	6950	5030	in.	1.7	10.0	31.0
				3150	2280	mm	43	254	787
33x12-20 (12-16.5)	ST	7.5x20	156A2	8800	6375	in.	2.2	11.0	33.0
				4000	2900	mm	56	279	838
33x12-20 (12-16.5)	AP	7.5x20	152A2	7850	5690	in.	2.2	11.0	33.0
				3550	2575	mm	56	279	838
36x14-20 (14-17.5)	ST	7.5x20	159A2	9650	6990	in.	2.9	13.7	36.0
				4375	3170	mm	72	348	914
36x14-20 (14-17.5)	AP	7.5x20	155A2	8550	6190	in.	2.9	13.7	36.0
				3875	2810	mm	72	348	914
40x14-20 (15-19.5)	ST	10.0x20	173A2	14300	10360	in.	4.0	14.0	40.0
				6500	4715	mm	102	356	1016
40x14-20 (15-19.5)	AP	10.0x20	169A2	12800	9270	in.	4.0	14.0	40.0
				5800	4205	mm	102	356	1016