

# MS708 TR

Solid OTR Loader - OTR PRO  
L-5



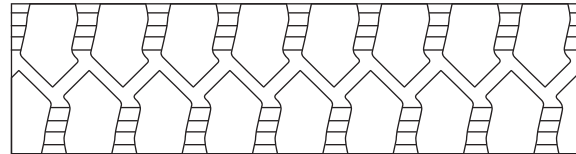
Premium three stage solid OTR loader tire.

- Zero maintenance solid construction
  - No flats due to punctures or sidewall damage
  - No need to check air pressure
- Extra deep tread allows for 3 to 5 times longer tire life vs pneumatic
- Ultra wear & cut resistant tread compound
- Heat resistant, cushion center compound
- Self-cleaning tread pattern designed for maximum chunk resistance
- Aperture (AP) sidewall configuration provides softer ride
- Mounts on standard multi-piece earthmover rims
- Ideal for the most extreme OTR and construction applications

Applications



Footprint



Size	Sidewall	Rim	Load Index	Load Capacity (lbs / kg)		Unit	Tire Dimensions		
				5 mph 10 km/h	10 mph 15 km/h		Tread Depth	Section Width	Overall Diameter
17.5-25	ST	14.00/1.5	192A2	24700	17890	in.	6.1	17.8	53.0
				11200	8120	mm	155	452	1346
17.5-25	AP	14.00/1.5	188A2	22230	16100	in.	6.1	17.8	53.0
				10000	7250	mm	155	452	1346
20.5-25	ST	17.00/2.0	204A2	35300	25570	in.	7.4	20.8	58.8
				16000	11600	mm	188	528	1494
20.5-25	AP	17.00/2.0	200A2	30900	22380	in.	7.4	20.8	58.8
				14000	10150	mm	188	528	1494
23.5-25	ST	19.50/2.5	212A2	44100	31950	in.	8.6	23.5	64.0
				20000	14500	mm	218	597	1626
23.5-25	AP	19.50/2.5	208A2	39700	28760	in.	8.6	23.5	64.0
				18000	13050	mm	218	597	1626
26.5-25	ST	22.00/3.0	219A2	53600	38830	in.	9.5	27.0	68.4
				24300	17620	mm	241	686	1737
26.5-25	AP	22.00/3.0	215A2	48100	34840	in.	9.5	27.0	68.4
				21800	15805	mm	241	686	1737
29.5-25	ST	25.00/3.5	226A2	66000	47810	in.	10.4	29.7	73.0
				30000	21750	mm	264	754	1854
29.5-25	AP	25.00/3.5	222A2	58400	42305	in.	10.4	29.7	73.0
				26500	19210	mm	264	754	1854