

# MS802

## Bias Tires - GSE Ground Support Equipment

The aggressive, self-cleaning tread design & sidewall protection provides excellent drive comfort and traction.

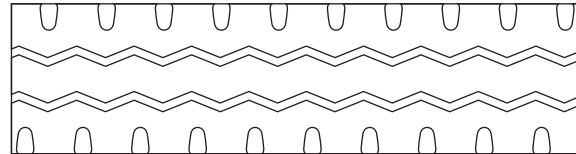
- Wear & cut resistant tread compound
- Self-cleaning
- Reduced vibration & increased stability
- Excellent grip and full flat profile
- Reinforced shoulder, sidewall and bead for enhanced stability
- Deep under tread for improved puncture resistance



### Applications



### Footprint



Size	PR	Type	Rim	Load Capacity (kg) up to 25 km/h	Unit	Tire Dimensions		
						Tread Depth	Section Width	Overall Diameter
6.90-9	10	TT	4.00E	1320	in.	22/32	6.4	21.4
					mm	17	162	544