

MS910R

Radial MPT / EM Tire

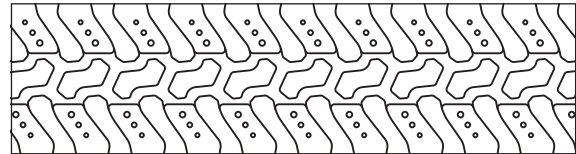


- Wide range of sizes
- Versatile non-directional off-the-road tread pattern
- Excellent on-road suitability
- All steel radial construction for maximum durability, traction and comfort
- Special self-cleaning design with dome mud breakers

Applications



Footprint



Size	Type	Rim	LISS1	LISS2	Load Capacity (kg at xx km/h) at yy pressure	Unit	Tire Dimensions		
							Tread Depth	Section Width	Overall Diameter
335/80R20	MPT	11.00	149K	163A2	3250kg, 110km/h, 650kPa	in.	0.7	13.1	41.0
						mm	18.5	334	1041
335/80R20	EM	11.00	147A2	136B	3075kg, 10km/h, 375kPa	in.	0.7	13.1	41.0
						mm	18.5	334	1041
365/80R20	MPT	11.00	152K	168A2	3550kg, 110km/h, 625kPa	in.	0.7	14.3	42.9
						mm	18.5	363	1089
365/80R20	EM	11.00	153A2	141B	3650kg, 10km/h, 375kPa	in.	0.7	14.3	42.9
						mm	18.5	363	1089
405/70R20	MPT	13.00	152K	168A2	3550kg, 110km/h, at 600kPa	in.	0.8	16.0	42.4
						mm	20.5	407	1076
405/70R20	EM	13.00	155A2	143B	3875kg, 10km/h, 375kPa	in.	0.8	16.0	42.4
						mm	20.5	407	1076
405/70R24	MPT	13.00	152G	168A2	3550kg, 90km/h, 500kPa	in.	0.8	16.1	46.5
						mm	20.5	409	1181
405/70R24	EM	13.00	158A2	146B	4250kg, 10km/h, 375kPa	in.	0.8	16.1	46.5
						mm	20.5	409	1181
455/70R24	MPT	14.00	154G	174A2	3750kg, 90km/h, 400kPa	in.	0.9	18.1	49.2
						mm	23.5	460	1249
455/70R24	EM	14.00	165A2	154B	5150kg, 10km/h, 375kPa	in.	0.9	18.1	49.2
						mm	23.5	460	1249