



LOGXTRA

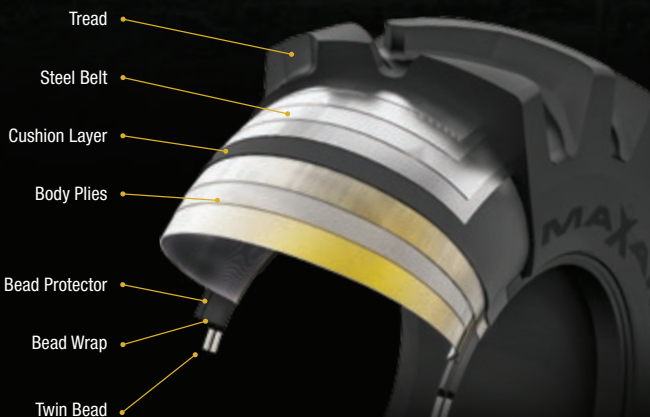
Forestry is a harsh and grueling industry, which is why the LOGXTRA is engineered to be the solution for extreme applications. Built tough from the inside out, the LOGXTRA is engineered to give you the performance you deserve.

MAXAM TIRE
300 Rosewood Drive, Suite 102, Danvers, MA 01923 U.S.A.
T. 844-MAXAM-NA F. 978-560-0624

MAXAMTIRE.COM



MAXAM Tire's dedicated team of engineers, local sales representatives, along with manufacturing and distribution partners continuously analyze the market to ensure our product portfolio meets the requirements of today's market, and your customers. Complete customer satisfaction is the ultimate goal of MAXAM Tire, driving our desire to continuously innovate and deliver quality products. With confidence and pride, we stand behind our reputation for delivering exceptional product quality, reliability, performance, and value.



TREAD DEPTH COMPARISON

Sizes	MAXAM LOGXTRA	Competitor A	Competitor B	Competitor C	Competitor D
23.1-26 16P	72	66	69	68	72
28L-26 20P	76	70	69	72	74
24.5-32 16P	75	70	80	N/A	64
30.5L-32 26P/32P	82	72	69	76	70
35.5L-32 26P/30P	84	81	82	76	75



**BUSINESS SOLUTIONS
PROVIDER**

2023



COMMAND THE FOREST



FORESTRY TIRE LINEUP

MAXAMTIRE.COM

LOGXTRA

Designed for use on demanding forestry equipment. High-strength, belt-stabilized tire construction provides excellent traction and flotation in severe logging applications.

MAXAM MS930

LOGXTRA - LS2 FORESTRY

- Heavy-duty shoulder and sidewall
- Maximum protection from cuts, impacts and punctures
- Cut-resistant compound specifically engineered for forestry service
- Steel reinforced undertread
- Nylon-wrapped beads prevents unwinding

MAXAM MS931

LOGXTRA - LS2 FORESTRY

- Heavy-duty shoulder and sidewall
- Maximum protection from cuts, impact, and punctures
- Cut-resistant compound specifically engineered for forestry service
- Steel reinforced undertread
- Nylon-wrapped beads prevents unwinding

MAXAM MS933

LOGXTRA - HIGH FLOTATION HF-4

- Heavy-duty shoulder and sidewall
- Maximum protection from cuts, impact, and punctures
- Cut-resistant compound specifically engineered for forestry service
- Steel reinforced undertread
- Extra-wide footprint provides exceptional flotation in muddy and wet ground conditions



Size	Ply Rating	O.D. (in)	S.W. (in)	T.D. (32nds)
28L-26	20	64.2	27.9	72
24.5-32	20	72.1	24.5	76
30.5L-32	26	72.7	30.2	76
35.5L-32	26	79.3	35.2	79

Size	Ply Rating	O.D. (in)	S.W. (in)	T.D. (32nds)
23.1-26	16	63.8	22.8	72
28L-26	16	63.9	28.0	76
	20 26	64.1	27.8	76
24.5-32	20	72.1	24.5	75
30.5L-32	26 32	73.0	30.2	82
35.5L-32	26 30	79.2	35.5	84

Size	Ply Rating	O.D. (in)	S.W. (in)	T.D. (32nds)
66 x 43.00-25	20	68.8	40.9	120
66 x 43.00-26	20	68.8	40.9	120
67 x 34.00-25	20	69.9	33.9	120
67 x 34.00-26	20	69.9	33.9	120
73 x 44.00-32	20	75.3	44.0	96
73 x 50.00-32	20	76.5	50.0	96