

The MAXAM logo is positioned in the top right corner of the image. It features the brand name in a bold, white, sans-serif font. A distinctive design element is a small white circle above the letter 'A', which is connected to the top bar of the letter by a thin horizontal line.

MAXAM

The background of the entire page is a blue-tinted, halftone-style photograph of a Maxam MS708 wheel loader. The loader is shown from a side-front perspective, with its bucket raised. The image has a grainy, dotted texture. The text is overlaid on the lower-left portion of the loader's body.

# MS708

## EVOLUTIONARY PERFORMANCE

---

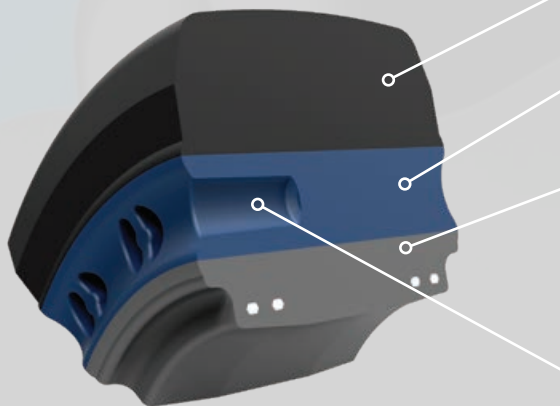
SOLID OTR

# MS708

MS708 WAS DEVELOPED ON THE HISTORY OF SOLID TIRES.  
IT IS THE RESULT OF EVOLUTION AND ULTIMATE PERFORMANCE.

## MADE TO PERFORM WITH QUALITY

The MS708 is manufactured using technologically advanced equipment and a proprietary building and curing process. This process, unlike most manufacturers, eliminates tread separation and delamination defects (such as trapped air between rubber layers, and porosity) for extended wear rates.



### 50% TREAD RUBBER

Deepest wearable tread in the market

### 25% HEAT DISSIPATING BODY

Deliver effective heat dissipation and superior ride quality

### 25% NATURAL BASE

The only 3-stage solid tire in its class

Developed with an all-natural rubber base construction

Reinforced with four radial bead base for the greatest tensile strength

### PATENTED DOUBLE-D APERTURES

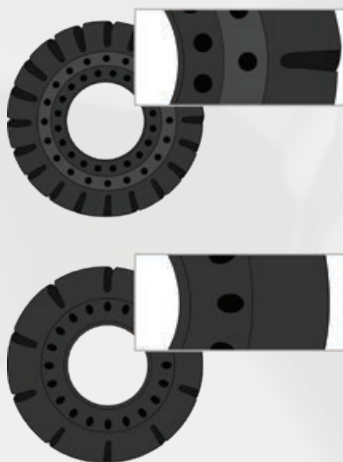
Provide additional flex in the sidewall

Absorb shocks and increase application longevity

Minimize stress cracks

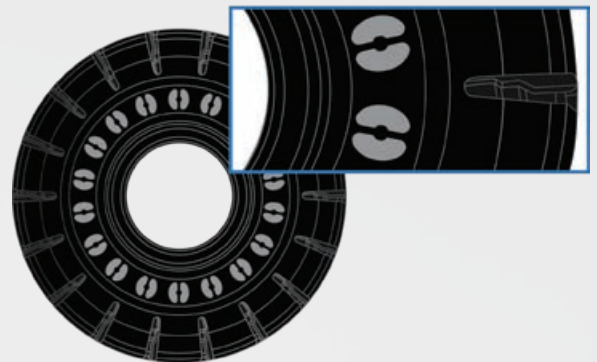
## SOLID OTR EVOLUTION

Our solid tire experts took the previous generations and innovated a product that's been evolved to deliver only the best results in performance, durability and reliability.



- Oldest Design
- Basic gear lug tread pattern
- Low traction and round apertures prone to stress cracking

- Basic gear lug tread pattern
- Low traction and elliptical apertures are still prone to stress cracking



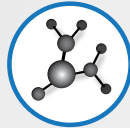
- Innovative high traction pattern
- 3-Stage construction with superior compounding
- Double-D aperture with minimum stress cracking

## EVOLUTIONARY PERFORMANCE



### 3-STAGE TECHNOLOGY

Maximum heat & cut resistance and superior ride comfort



### 65D CENTER COMPOUNDING

Dissipates heat faster for extended operation



### PATENTED DOUBLE-D APERTURES

Decrease stress crack and absorbs shocks for maximum comfort



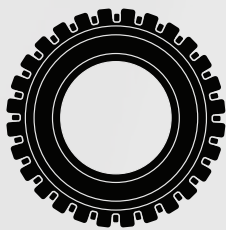
### DEEPEST WEARABLE TREAD

Maximum tear & tensile strength, extended tire life

## MS708 PURCHASING OPTIONS

MAXAM makes it easy for your business by offering various purchasing options.

1



### TIRE ONLY

Deliver tires, get pressed locally.

2



### NEW TIRE & WHEEL

Tire and wheel assembly for specific machine.

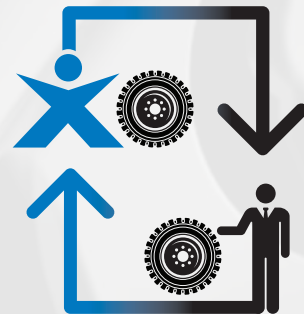
3



### CUSTOMER PROVIDED WHEEL CHANGE OUT

Send us your wheel assembly, we return with a new tire on it.

4



### WHEEL EXCHANGE

We send you a tire and wheel assembly, you return your old tire and wheel to us.

# MS708



- Zero maintenance and downtime for maximum productivity
- True 3-stage all rubber design for reduced heat generation and high cut resistance
- Low durometer center compound, combined with patented “Double-D” apertures provide excellent ride vs. 2-stage products

## APPLICATIONS

- Recycling
- Glass Recycling
- CDE Material Recycling
- Waste Transfer Stations
- Demolition
- Foundry Applications

SIZE	O.D.		T.D.	
	in	mm	in	mm
17.5-25	53.0	1346	6.1	155
20.5-25	58.8	1493	7.4	188
23.5-25	64.0	1625	8.6	218
26.5-25	68.4	1737	9.5	241
29.5-25	73.0	1854	10.4	264
18.00-25	64.0	1625	8.6	218
30/75-29	75.0	1905	10.4	264

**MAXAM TIRE**  
 300 Rosewood Drive Suite 102  
 Danvers, MA 01923 USA  
 T. 844-MAXAM-NA F. 978-560-0624



[MAXAMTIRE.COM](http://MAXAMTIRE.COM)