



MAXAM





TABLE OF CONTENTS

EcoPoint³ TECHNOLOGY 4

PREMIUM LINE HAUL

MX100L 6

MX200L 8

MX300L 10

PREMIUM REGIONAL

MX210R 12

MX310R 14

MIXED SERVICE

MX220V 16

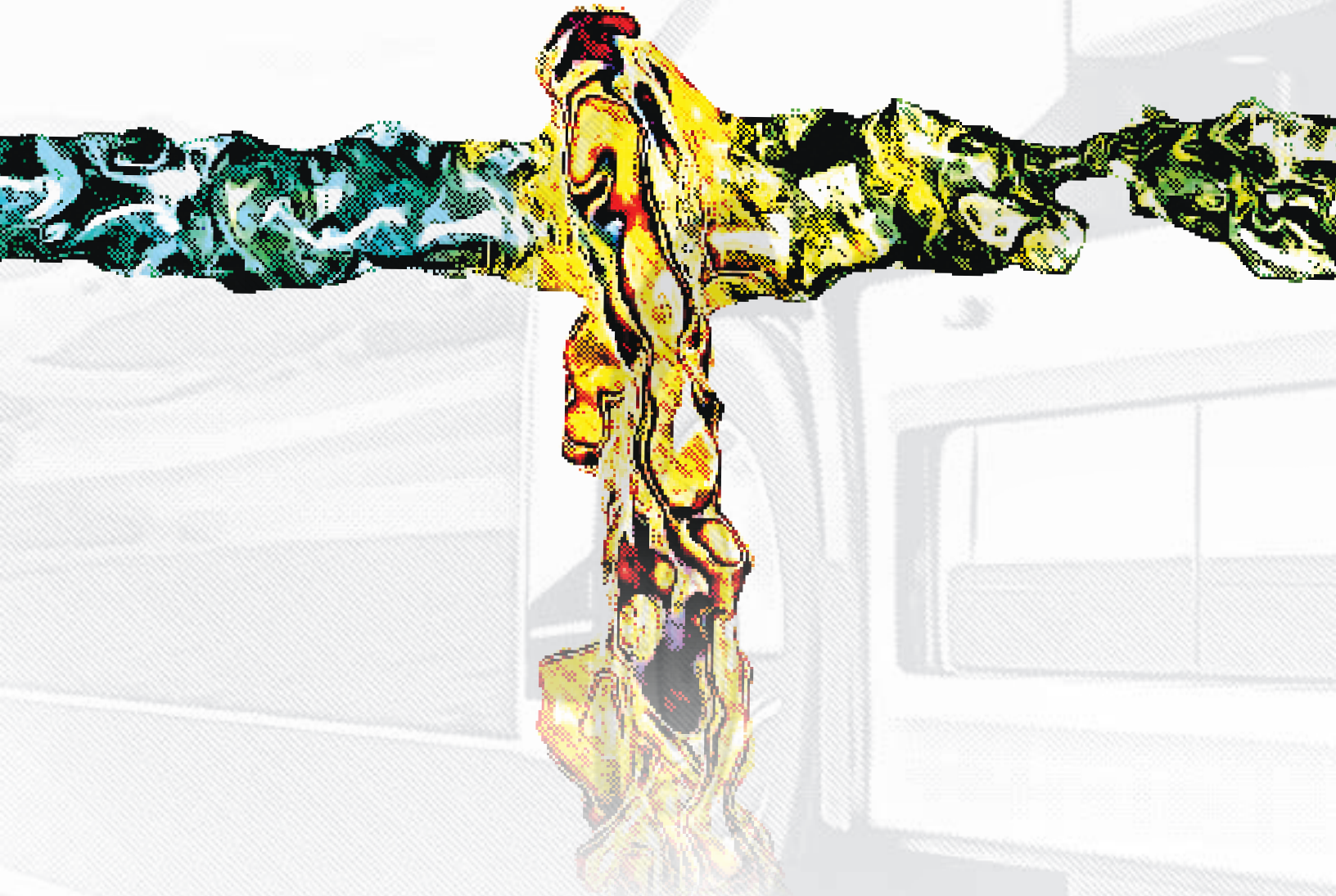
MX320V 18

MX325V 20

LOAD INDEX 22

WARRANTY 24

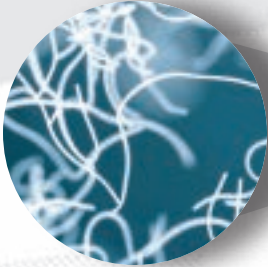
What is EcoPoint³ ?



**LEARN MORE
ABOUT THE ECOPOINT³ PROCESS**

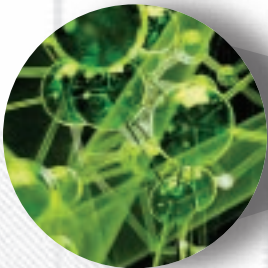


Experience Superior Performance



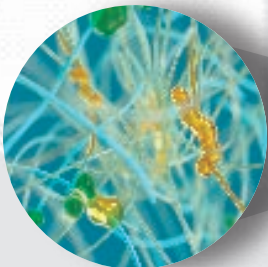
ENHANCED PERFORMANCE AND LONGEVITY

EcoPoint³ technology ensures superior ingredient distribution, leading to optimized tire performance. Experience enhanced wear and puncture resistance, in addition to reduced heat buildup, extending tire life and safety in general.



SUSTAINABILITY AND ENVIRONMENTAL IMPACT

This innovative process lowers carbon emissions throughout production. With fewer mixing stages, it significantly reduces energy consumption, creating a smaller environmental footprint.



COST AND EFFICIENCY ADVANTAGES

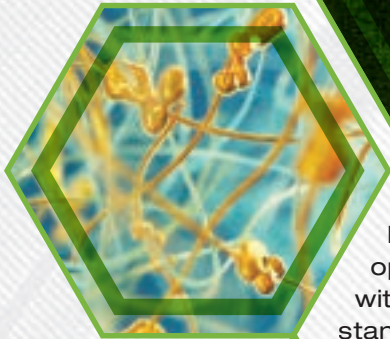
By reducing rolling and skid resistance, and improving wear resistance, EcoPoint³ delivers savings through longer-lasting tires, and minimal downtime.

The **MX100L** is our premium trailer tire for highway line haul applications. Engineered with the EcoPoint³ compound technology, this extra-fuel efficient tire also encompasses unparalleled wet traction with a unique rib design, along with prolonged even wear with a decoupling groove.

-  **FUEL ECONOMY**
-  **WET TRACTION**
-  **EXCELLENT RETREADABILITY**



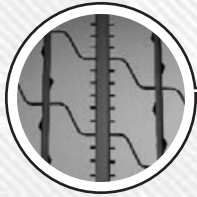
MX100L



The MX100L is engineered with our proprietary EcoPoint³ compound technology. EcoPoint³ optimizes mileage, fuel economy and wet traction without compromising performance, setting a new standard for long-haul application.



SCAN TO LEARN MORE



UNIQUE RIB DESIGN

Enhanced wet traction, fuel economy and gives you maximum mileage.

EcoPoint³ TECHNOLOGY COMPOUND

Patented EcoPoint³ compound technology enables maximum fuel efficiency and wet traction and conserves energy for enhanced rolling resistance.

PROMOTES EVEN WEAR

Decoupling groove to minimize irregular wear, ensuring maximum performance and tread life.

ADDED TREAD TRACTION

Micro-sipes provide boosted traction and rib edge stress absorption in the footprint, minimizing irregular wear.

OPTIMIZED STEEL BELT PACKAGE

Provide you enhanced durability and retreadability in addition to improved rolling resistance.

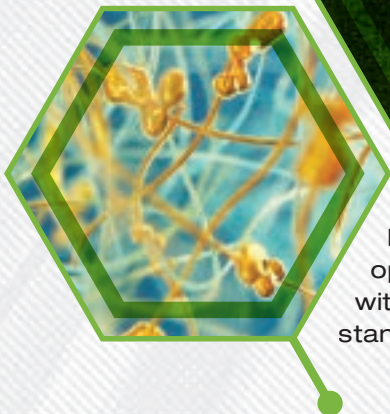
CODE	SIZE	LI	SR	PR	TD	RIM	OD	SW	SLR	LCC 1X	LCC 2X
V210000	11R22.5	144/142	M	14PR	12	8.25	41.9	11.0	19.3	6175@105	5840@105
V210001	11R24.5	146/143	M	14PR	12	8.25	43.5	11.0	20.3	6610@105	6005@105
V210002	285/75R24.5	144/141	M	14PR	12	8.25	41.3	11.1	19.4	6175@110	5675@110
V210003	295/75R22.5	144/141	M	14PR	12	9.00	39.9	11.7	18.7	6175@110	5675@110

The **MX200L** is our premium steer tire for highway line haul applications. Featuring the EcoPoint³ compound technology, the **MX200L** guarantees optimized mileage, fuel economy and traction without compromising performance. Engineered for control and comfort with a decoupling groove and five wide ribs, the **MX200L** features micro-snipes for enhanced traction and safety in wet conditions.



MX200L

-  **FUEL ECONOMY**
-  **WET TRACTION**
-  **EXCELLENT RETREADABILITY**



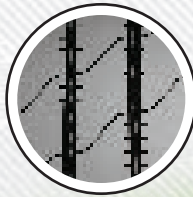
The MX200L is engineered with our proprietary EcoPoint³ compound technology. EcoPoint³ optimizes mileage, fuel economy and wet traction without compromising performance, setting a new standard for long-haul application.



SCAN TO LEARN MORE

UNPARALLELED STABILITY

With a design with five wide ribs to evacuate water in wet conditions.


EcoPoint³ TECHNOLOGY COMPOUND

Patented EcoPoint³ compound technology enables maximum fuel efficiency and wet traction and conserves energy for enhanced rolling resistance.

MINIMUM IRREGULAR WEAR

Decoupling groove to minimize irregular wear, ensuring maximum performance.


HEAVY-DUTY BEAD CONSTRUCTION

Ensures proper mounting and even pressure for maximum casing durability and life.

REINFORCED STEEL BELT PACKAGE

Maximize durability and retreadability.

CODE	SIZE	LI	SR	PR	TD	RIM	OD	SW	SLR	LCC 1X	LCC 2X
V220004	11R22.5	144/142	M	14PR	19	8.25	41.9	11.0	19.3	6175@105	5840@105
V220000	11R22.5	146/143	M	16PR	19	8.25	41.9	11.0	19.3	6610@120	6005@120
V220005	11R24.5	146/143	M	14PR	19	8.25	43.5	11.0	20.3	6610@105	6005@105
V220001	11R24.5	149/146	M	16PR	19	8.25	43.5	11.0	20.3	7160@120	6610@120
V220002	285/75R24.5	144/141	M	14PR	19	8.25	41.3	11.1	19.4	6175@110	5675@110
V220003	295/75R22.5	144/141	M	14PR	19	9.00	39.9	11.7	18.7	6175@110	5675@110
V220006	295/75R22.5	146/143	M	16PR	19	9.00	39.9	11.7	18.7	6610@120	6005@120

The **MX300L** is our premium drive tire for highway line haul applications. Boasting maximum fuel efficiency with the lowest rolling resistance through the EcoPoint³ compounds and engineering, the **MX300L** also features optimized center lugs for enhanced tread life and precised movement.



FUEL ECONOMY



WET TRACTION



EXCELLENT RETREADABILITY

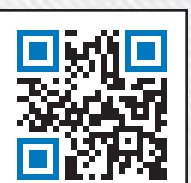


MX300L

EXPERIENCE THE



The MX300L is engineered with our proprietary EcoPoint³ compound technology. EcoPoint³ optimizes mileage, fuel economy and wet traction without compromising performance, setting a new standard for long-haul application.



EXTENDED TRACTION

Optimized center lugs enhance tread life and controls movement, delivering a uniform wear.



EcoPoint³ TECHNOLOGY COMPOUND

Patented EcoPoint³ compound technology enables maximum fuel efficiency and wet traction and conserves energy for enhanced rolling resistance.

CLOSED SHOULDER DESIGN

Even weight and torque distribution for exceptional stability and even wear.

DURABLE BEAD CONSTRUCTION

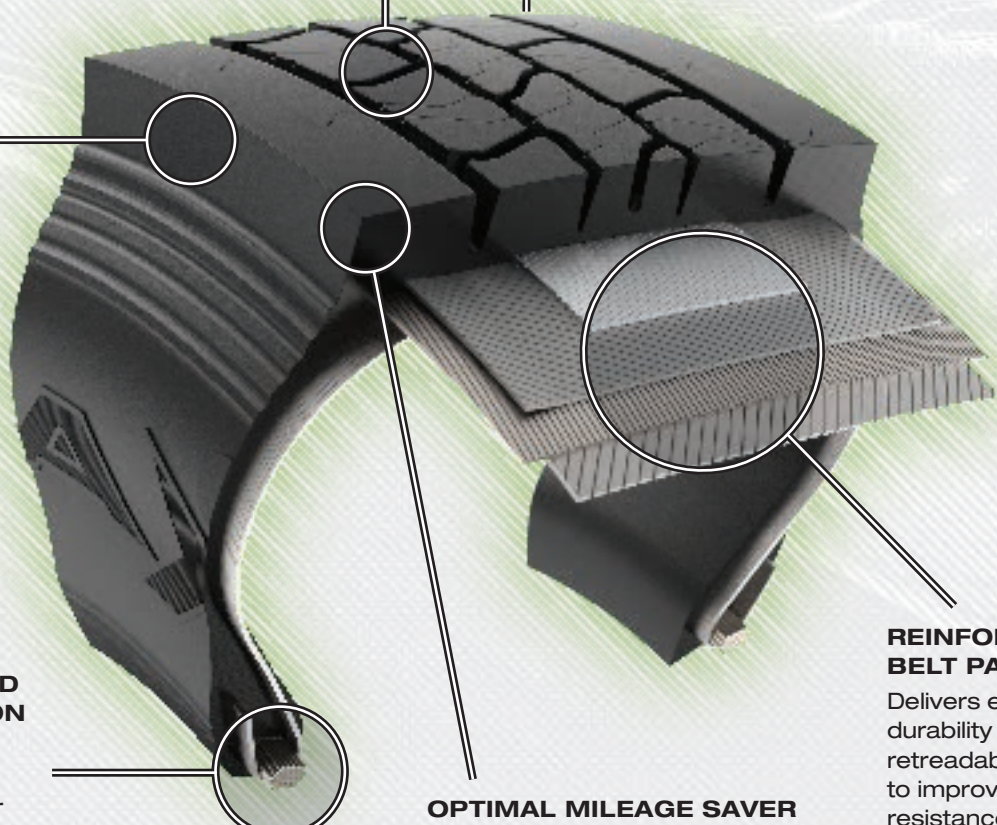
Ensures proper mounting and even pressure for maximum casing durability and life.

OPTIMAL MILEAGE SAVER

Substantial 30/32" tread depth for exceptional mileage and a solid foundation for retreading.

REINFORCED STEEL BELT PACKAGE

Delivers enhanced durability and retreadability in addition to improved rolling resistance.



CODE	SIZE	LI	SR	PR	TD	RIM	OD	SW	SLR	LCC 1X	LCC 2X
V230004	11R22.5	144/142	M	14PR	30	8.25	41.9	11.0	19.3	6175@105	5840@105
V230000	11R22.5	146/143	M	16PR	30	8.25	41.9	11.0	19.3	6610@120	6005@120
V230005	11R24.5	146/143	M	14PR	30	8.25	43.5	11.0	20.3	6610@105	6005@105
V230001	11R24.5	149/146	M	16PR	30	8.25	43.5	11.0	20.3	7160@120	6610@120
V230002	285/75R24.5	144/141	M	14PR	30	8.25	41.3	11.1	19.4	6175@110	5675@110
V230003	295/75R22.5	144/141	M	14PR	30	9.00	39.9	11.7	18.7	6175@110	5675@110

The **MX210R** is Maxam's regional all-position tire, engineered with the patented EcoPoint³ compound technology, taking efficiency and performance to new heights with optimized mileage, fuel economy and wet traction. Featuring a solid shoulder for enhanced durability and retreadability, the **MX210R** delivers unparalleled durability and performance for regional applications.



FUEL ECONOMY



WET TRACTION



EXCELLENT RETREADABILITY

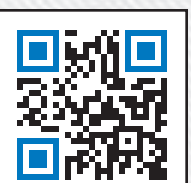
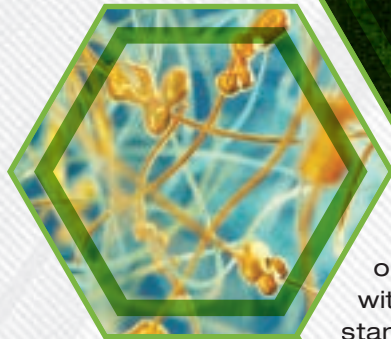


MX210R

EXPERIENCE THE



The MX210R is engineered with our proprietary EcoPoint³ compound technology. EcoPoint³ optimizes mileage, fuel economy and wet traction without compromising performance, setting a new standard for long-haul application.



OPTIMIZED CENTER LUGS

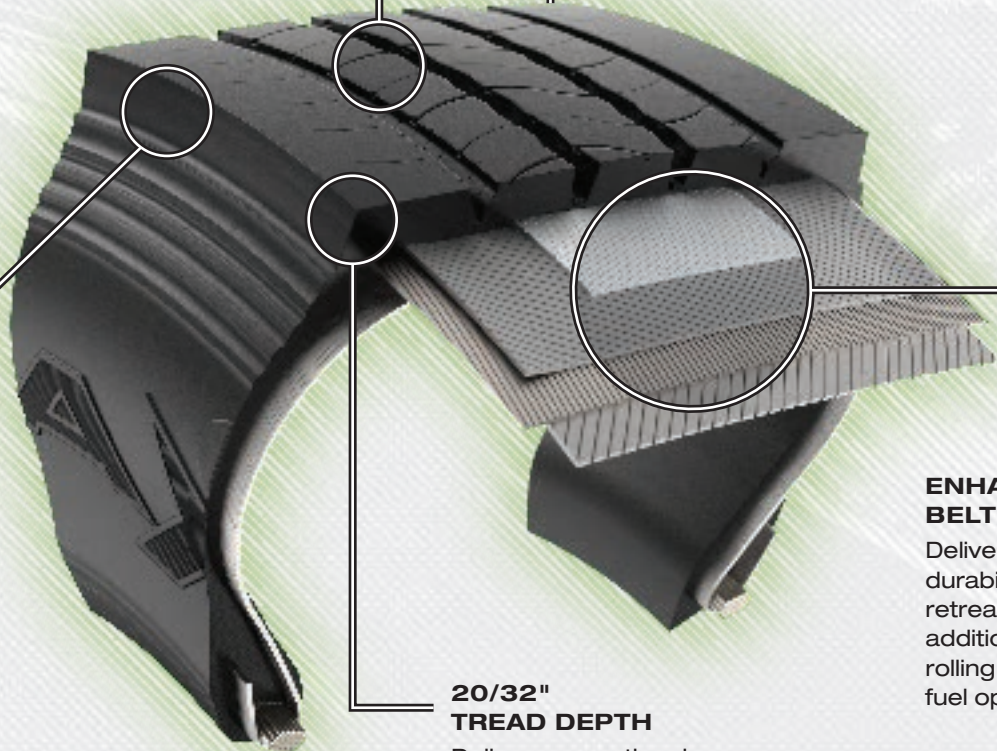
Provides excellent traction, improved wear resistance and evacuates water in wet conditions.


EcoPoint³ TECHNOLOGY COMPOUND

Patented EcoPoint³ compound technology enables maximum fuel efficiency and wet traction and conserves energy for enhanced rolling resistance.

SOLID SHOULDER

Improved stability, mileage, and wear resistance in high scrub applications.


ENHANCED STEEL BELT PACKAGE

Delivers enhanced durability and retreadability in addition to minimum rolling resistance for fuel optimization.

20/32" TREAD DEPTH

Delivers exceptional mileage, promising unparalleled durability.

CODE	SIZE	LI	SR	PR	TD	RIM	OD	SW	SLR	LCC 1X	LCC 2X
V221008	11R22.5	144/142	M	14PR	20	8.25	41.9	11.0	19.3	6175@105	5840@105
V221000	11R22.5	146/143	M	16PR	20	8.25	41.9	11.0	19.3	6610@120	6005@120
V221009	11R24.5	146/143	M	14PR	20	8.25	43.5	11.0	20.3	6610@105	6005@105
V221001	11R24.5	149/146	M	16PR	20	8.25	43.5	11.0	20.3	7160@120	6610@120

The **MX310R** is Maxam's regional drive tire with the proprietary EcoPoint³ compound technology, delivering optimized mileage, fuel economy, and wet traction without compromise. Balancing traction and mileage with an aggressive lug pattern for even wear and traction, the **MX310R** regional drive accommodates multiple applications, even in extreme weather conditions.



MX310R

-  **FUEL ECONOMY**
-  **WET TRACTION**
-  **EXCELLENT RETREADABILITY**



The MX310R is engineered with our proprietary EcoPoint³ compound technology. EcoPoint³ optimizes mileage, fuel economy and wet traction without compromising performance, setting a new standard for long-haul application.



SCAN TO LEARN MORE

ALL-WEATHER BOOSTED TRACTION

Optimized center lugs design delivers maximum traction and wear resistance.



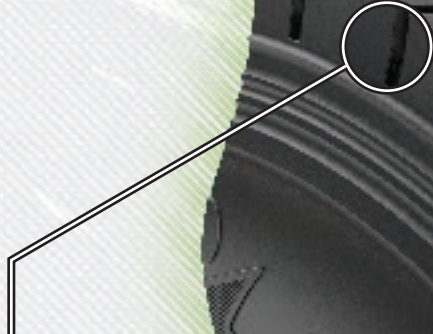
EcoPoint³ TECHNOLOGY COMPOUND

Patented EcoPoint³ compound technology enables maximum fuel efficiency and wet traction and conserves energy for enhanced rolling resistance.



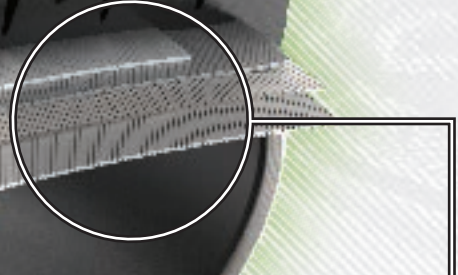
EXTREME TRACTION ENHANCEMENT

Open shoulder design provides maximum traction for all weather conditions.



ENHANCED STEEL BELT PACKAGE

Delivers enhanced durability and retreadability in addition to minimum rolling resistance for fuel optimization.



CODE	SIZE	LI	SR	PR	TD	RIM	OD	SW	SLR	LCC 1X	LCC 2X
V231006	11R22.5	144/142	M	14PR	28	8.25	41.9	11.0	19.3	6175@105	5840@105
V231000	11R22.5	146/143	M	16PR	28	8.25	41.9	11.0	19.3	6610@120	6005@120

The **MX220V** all-position mixed service radial is engineered with a wear and cut-resistant tread compound, providing long-lasting performance for dump trucks even in severe conditions. Featuring a solid shoulder design to withstand lateral scrubbing and a deep tread depth, this tire enables superior durability and reliability.

 **DURABILITY**

 **PERFORMANCE**

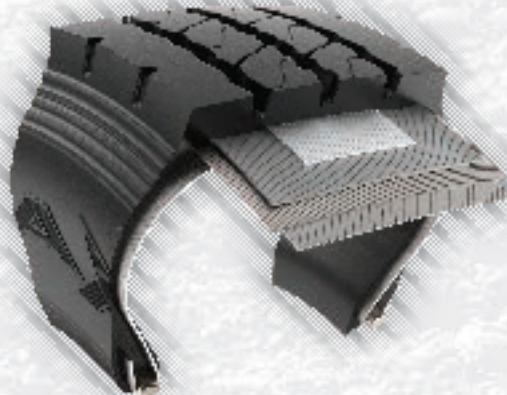
 **TRACTION**



MX220V

MX220V FEATURES

- **SOLID SHOULDER DESIGN**
Withstands lateral scrubbing in severe conditions.
- **CUT AND WEAR RESISTANT COMPOUND**
Prevents tread damages, enabling maximum performance and durability.
- **STONE PROTECTION DESIGN**
Stone protection buttons prevent stone drilling, ensuring maximum tire life and belt protection.



STONE PROTECTION

Stone protection buttons within tread voids to safeguard against stone drilling, ensuring maximum tire life and belt protection.



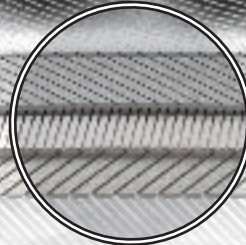
CLOSED SHOULDER DESIGN

Withstands lateral scrubbing in severe conditions.



HEAVY-DUTY TREAD COMPOUND

Cut and wear-resistant compound prevents tread damage and cuts.



HEAVY-DUTY BEAD CONSTRUCTION

Ensures proper mounting and even pressure for maximum casing durability and life.

HEAVY-DUTY ALL-STEEL BELT PACKAGE

Heavy-duty steel belts to ensure maximum durability and excellent for retreading.



CODE	SIZE	LI	SR	PR	TD	RIM	OD	SW	SLR	LCC 1X	LCC 2X
V222000	11R22.5	146/143	M	16PR	24	8.25	41.9	11.0	19.3	6610@120	6005@120
V222001	W11R24.5	149/146	M	16PR	24	8.25	43.5	11.0	20.3	7160@120	6610@120
V222007	315/80R22.5	161/157	G	20PR	23	9.00	42.8	12.1	19.7	10200@130	9090@130
V222002	315/80R22.5	161/157	K	20PR	23	9.00	42.8	12.1	19.7	10200@130	9090@130

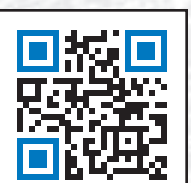
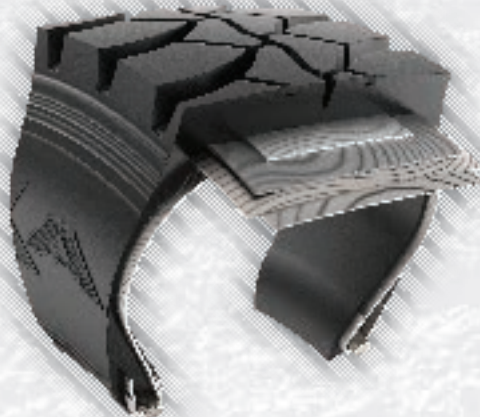
The **MX320V** is MAXAM's mixed service drive tire, featuring a reinforced abrasion-resistant compound for maximum tire life and durability, along with an aggressive lug pattern for maximum traction, even in the toughest environment. With its reinforced abrasion-resistant compound, this tire boasts a low-rolling resistance and unrivaled performance with cut, chip, and abrasion-resistance.

**DURABILITY****TRACTION****LONG TREAD LIFE**

MX320V

MX320V FEATURES

- **OPEN SHOULDER DESIGN**
For enhanced traction for all weather surfaces.
- **ROBUST COMPOUND**
Enhanced abrasion and cut resistance, maximizing durability and performance.
- **UNIQUE LUG PATTERN**
Maximizes traction and wear performance for multiple surfaces.



AGGRESSIVE LUG PATTERN WITH CENTER LUG DESIGN

Delivers unparalleled traction, wear and handling in multiple surfaces.

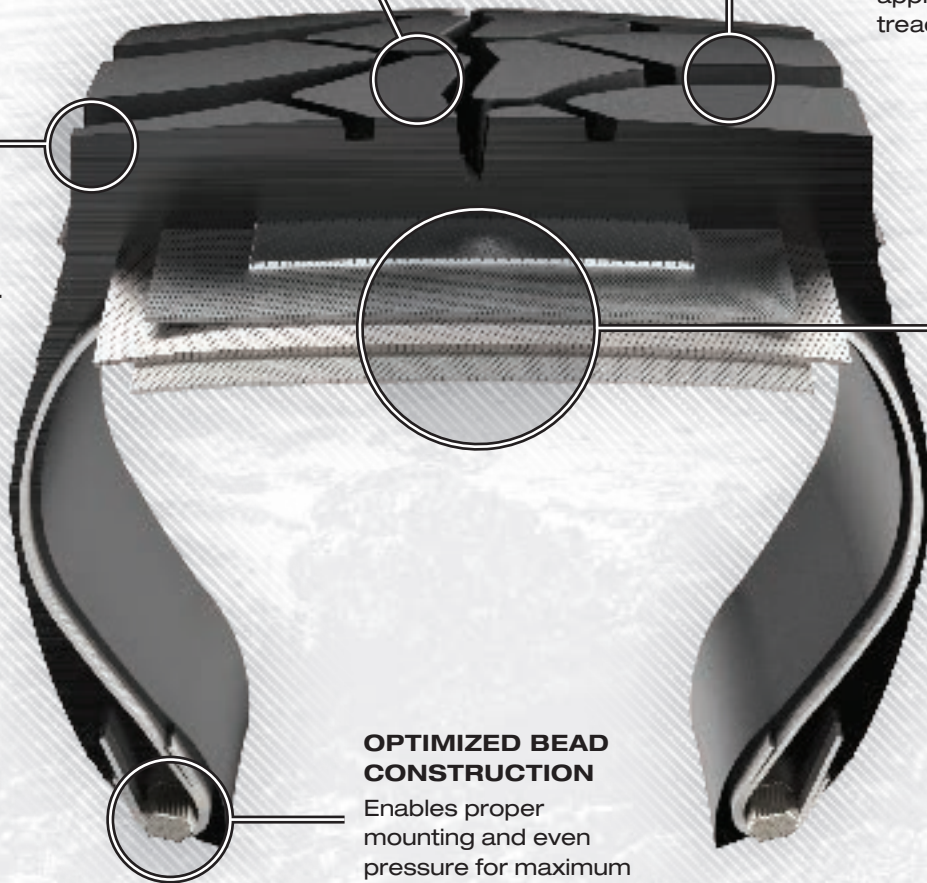


ROBUST TREAD COMPOUND

Reinforced abrasion resistance in severe application against tread damage.

EXTREME TRACTION ENHANCEMENT

Open shoulder design provides maximum traction for all weather conditions.



ENHANCED ALL-STEEL CASING

Heavy-duty steel belts to ensure maximum durability and excellent for retreading.

OPTIMIZED BEAD CONSTRUCTION

Enables proper mounting and even pressure for maximum casing durability and life.

CODE	SIZE	LI	SR	PR	TD	RIM	OD	SW	SLR	LCC 1X	LCC 2X
V232000	11R22.5	146/143	K	16PR	30	8.25	41.9	11.0	19.3	6610@120	6005@120
V232001	11R24.5	149/146	K	16PR	30	8.25	43.5	11.0	20.3	7160@120	6610@120

The **MX325V** mixed service drive tire is engineered with a robust tread compound and aggressive tread pattern, delivering exceptional performance and tire life. With a 32/32" tread depth for optimized traction and wear and embedded stone ejectors for casing protection, this tire is designed to withstand tougher conditions for mixed service applications.

**STABILITY****PERFORMANCE****ABRASION-RESISTANT**

MX325V

MX325V FEATURES

- **REINFORCED CASING PROTECTION**

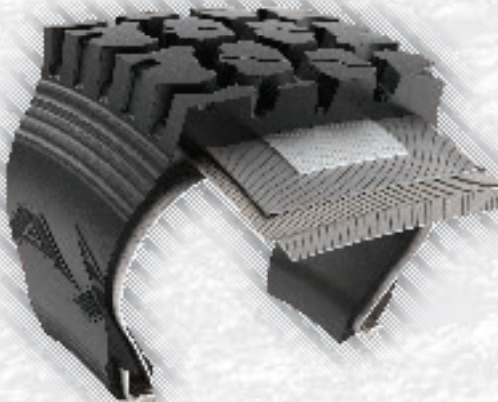
Triangular stone ejectors protect belts, ensuring maximum tire life.

- **CUT AND WEAR RESISTANT COMPOUND**

Prevents tread damages, enabling maximum performance and durability.

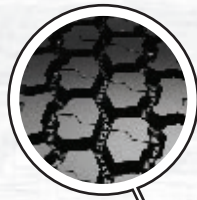
- **OPEN SHOULDER DESIGN**

Delivers extreme traction for all weather conditions and surfaces.

**SCAN TO LEARN MORE**

AGGRESSIVE LUG PATTERN WITH CENTER LUG DESIGN

Delivers unparalleled traction, wear and handling in multiple surfaces.

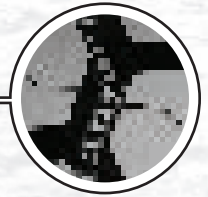


MAXIMUM TRACTION IN SEVERE CONDITIONS

32/32" tread depth for maximum traction and wear.

ROBUST TREAD COMPOUND

Cut and wear resistant compound prevents tread damage and cuts.

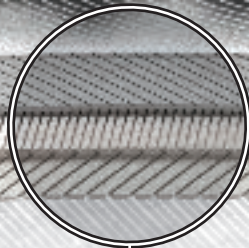


ENHANCED CASING PROTECTION

Triangular stone ejectors prevent stone drilling and protect belts, ensuring maximum tire life.

EXTREME TRACTION ENHANCEMENT

Open shoulder design provides maximum traction for all weather conditions.



ALL-STEEL BELT PACKAGE

Four heavy-duty steel belts to ensure maximum durability and excellent for retreading.

CODE	SIZE	LI	SR	PR	TD	RIM	OD	SW	SLR	LCC 1X	LCC 2X
V232500	11R22.5	146/143	K	16PR	32	8.25	41.9	11.0	19.3	6610@120	6005@120
V232501	11R24.5	149/146	K	16PR	32	8.25	43.5	11.0	20.3	7160@120	6610@120

TRUCK-BUS TIRES INTERNATIONAL LOAD INDEX NUMBERS

Load Index	kg	lb	Load Index	kg	lb
100	800	1765	141	2575	5675
101	825	1820	142	2650	5840
102	850	1875	143	2725	6005
103	875	1930	144	2800	6175
104	900	1985	145	2900	6395
105	925	2040	146	3000	6610
106	950	2095	147	3075	6780
107	975	2150	148	3150	6940
108	1000	2205	149	3250	7160
109	1030	2270	150	3350	7390
110	1060	2335	151	3450	7610
111	1090	2405	152	3550	7830
112	1120	2470	153	3650	8050
113	1150	2535	154	3750	8270
114	1180	2600	155	3875	8540
115	1215	2680	156	4000	8820
116	1250	2755	157	4125	9090
117	1285	2835	158	4250	9370
118	1320	2910	159	4375	9650
119	1360	3000	160	4500	9920
120	1400	3085	161	4625	10200
121	1450	3195	162	4750	10500
122	1500	3305	163	4875	10700
123	1550	3415	164	5000	11000
124	1600	3525	165	5150	11400
125	1650	3640	166	5300	11700
126	1700	3750	167	5450	12000
127	1750	3860	168	5600	12300
128	1800	3970	169	5800	12800
129	1850	4080	170	6000	13200
130	1900	4190	171	6150	13600
131	1950	4300	172	6300	13900
132	2000	4410	173	6500	14300
133	2060	4540	174	6700	14800
134	2120	4675	175	6900	15200
135	2180	4805	176	7100	15700
136	2240	4940	177	7300	16100
137	2300	5070	178	7500	16500
138	2360	5205	179	7750	17100
139	2430	5355	180	8000	17600
140	2500	5510			

NOTE: Selection of Load Index Numbers - Select the Load Index number with the equivalent load of the tire (round up at midpoint). If the tire maximum load rating is only given in Customary Units, convert that load to kilograms and then select the closest Load Index equivalent (kg) load.



MAXAM MEDIUM RADIAL TRUCK TIRE LIMITED WARRANTY

ADJUSTMENT PROCEDURE

Please contact the original retailer from whom the tire was purchased to inspect the tire and review the warranty claim. If the retailer is not accessible, you may call 1-844-629-2662 and speak to MAXAM Tire's Engineering department. A product Warranty Specialist will confirm the MAXAM Tire, and discuss your tire issue with you based on the MAXAM Limited Warranty. They will find a MAXAM Medium Radial Truck Tire dealer nearest you to whom you may take your MAXAM Medium Radial Truck Tire for inspection and any applicable warranty adjustment.

IMPORTANT SAFETY INFORMATION

Although any tire, no matter how well constructed, may fail due to many reasons, including but not limited to, road hazards like nails, pot holes or road debris and improper installation, maintenance or service, which could create the risk of property damage and/or serious or fatal injury, in an effort to help to keep you safe, here is a non-exhaustive list of practices with which you should comply:

- **ONLY HAVE PROFESSIONALLY TRAINED PERSONNEL MOUNT AND BALANCE TIRES.**
- Property damage and serious or fatal injury can also result from improper tire mounting and inflation procedures which can cause the tire beads to break with explosive force during installation of the tire on the wheel rim. This can also occur when tire size is not properly matched to the wheel's rim. Serious injury or damage can also occur if wheel rim and tire bead are not properly lubricated prior to installation or maximum tire pressure is exceeded when seating the tire bead on the rim.
- Never drive on tires that have less than 2/32nds of an inch of tread remaining; replace tires as soon as the tread reaches the tread wear indicators molded into the tread grooves of the tire which reveal when the tread depth remaining is 2/32nds of an inch.
- Proper tire inflation is essential. Under-inflation produces flexing of sidewalls and builds up heat to the point that premature tire failure may occur. Over-inflation can cause the tire to be more susceptible to impact damage, but do not reduce pressure when tires are hot.
- Check air pressure at least monthly when tires are "cold" – a "cold" tire is one that has been stationary typically for a minimum of 2 hours or driven less than 2 miles. Use an accurate tire air pressure gauge.

- Never overload the tires. The maximum load capacity and maximum inflation pressure are molded into the sidewall of your tire. Overloading a tire will result in the build up of excessive heat, which can lead to early tire failure. Overloading a tire will render a tire ineligible for warranty.
- Avoid damaging objects (potholes, glass, rocks, curbs, etc.), which may cause internal tire damage. Continued use of a tire that has suffered internal damage (which may not be visible externally) can lead to serious/ dangerous tire failure.
- Inspection and the determination of the internal damage to a tire requires dismounting of the tire from the wheel and examination – all of which should be done only by a tire professional.
- Excessive speeds create heat buildup in a tire, leading to possible tire failure. "Excessive speed" is a speed that does not take into consideration the weight of the load/and or the condition of the road you are traveling on. Never travel above the legal posted limit and slow down to a proper speed accordingly.
- Properly load and distribute the weight of the load in your vehicle. Improper weight distribution can have adverse effects on the safety of the vehicle and the performance of the tires.

This limited warranty provides two separate coverage benefits: (1) a limited warranty with respect to defects in material, workmanship or design; and (2) a limited radial casing retread warranty. The limited warranty with respect to defects in material, workmanship or design has a full replacement period (minus taxes and some associated costs) and a prorated period. And, in addition, you are the original owner of this Tire, it bears the prescribed Department of Transportation (DOT) identification number, it has been continuously installed on the vehicle on which it was originally installed, and no warranty exclusion or exception applies.

LIMITED WARRANTY AGAINST DEFECTS-NON-PRORATED

MAXAM shall replace an eligible MAXAM Medium Radial Truck Tire covered by this limited warranty that becomes unserviceable due to a defect in design, workmanship, or material during the first 20% of the original usable tread life (defined as the original tread depth minus 2/32") with a comparable new MAXAM tire without charge for the Tire Fees and/or taxes associated with the mounting and balancing of the replacement tire may apply. Please see the service provider for cost details.

LIMITED WARRANTY AGAINST DEFECTS-PRORATED

MAXAM shall replace an eligible MAXAM Medium Radial Truck Tire covered by this limited warranty that becomes unserviceable due to a defect in design, workmanship, or material after the first 20% of the original tread life on a prorated basis. The amount of the allowance is determined based on the percentage of the original "Usable Tread" remaining when the tire is presented for adjustment. The percentage allowance is applied to the purchase price of a comparable new MAXAM Medium Radial Truck Tire. You are responsible for paying for the price of the warranty replacement tire after the appropriate warranty allowance is deducted plus the charges for mounting and balancing the replacement tire as well as any applicable fees and/or taxes. The benefits of this limited warranty for defects in design, material and workmanship terminate once the usable tread of a MAXAM Medium Radial Truck Tire has been exhausted or eight (8) years from date of manufacture indicated on the tire, whichever is earlier.

COMPUTING REMAINING USEFUL TREAD

The remaining "Useful Tread" of your MAXAM Medium Radial Truck Tire is computed as a percentage of the original tire's usable tread depth. These depths vary by tire size. The original usable tread does not include the last 2/32nd inch (1.6 millimeters) of tread depth because tires become unsafe for use and must be replaced to avoid accident or injury when the tread depth remaining is 2/32" or less. Because tires do not always wear evenly, tread depth may vary depending where on the tire's tread depth is measured. The lowest depth on the tire is used to determine the remaining tread life for purposes of warranty replacement.

LIMITED RADIAL CASING RETREAD WARRANTY

The Limited Radial Casing Retread Warranty terminates after an eligible Tire has been retreaded three (3) times or eight (8) years after the manufacture date on the Tire, whichever occurs first. MAXAM will cover the mounting cost only during the 1st year of service or the 1st 10% of wear. MAXAM will apply a radial casing warranty allowance to the purchase price of a new MAXAM Medium Radial Truck Tire or a comparable new tire if your MAXAM Medium Radial Truck Tire cannot be retreaded due to defects in design, workmanship or materials prior to termination of this Limited Radial Casing Retread Warranty. The number of times the Tire has been retreaded must be clearly

identified on the casing sidewall. The limited retread warranty coverage of the radial casing of your new MAXAM Medium Radial Truck Tire may continue beyond the end of the tire's original useful tread life. Exclusion: MAXAM Medium Radial Truck used in off-highway service (such as mining & logging) are excluded and the tires are not covered under this Limited Radial Casing Retread Warranty. MAXAM will provide the following predetermined radial casing allowances for the first retread if this limited warranty applies:

Tire Size	Casing Allowance
235/85R16, 215, 235/75R17.5	\$15.00
225, 245, 265/70R19.5	\$30.00
255, 275/70R22.5	\$65.00
10R22.5	\$45.00
11R22.5, 295/75R22.5	\$65.00
12R22.5	\$70.00
11R24.5	\$70.00
285/75R24.5	\$75.00
315/80R22.5	\$70.00
385/65R22.5	\$75.00
425, 445/65R22.5	\$80.00
445/50R22.5 *	\$80.00
Casing value is reduced by 50% of the above values after the second retread *445/50R22.5 casing warranty up to the point of buff for second retread	

DEFINITION OF A COMPARABLE TIRE

For the purposes of your limited warranty against defects in design, workmanship, and materials and the limited radial casing warranty, a “comparable” tire will be supplied if a matching new MAXAM Medium Radial Truck Tire is out of production or is unavailable when the Tire is presented for warranty replacement. In which case, the warranty replacement tire may be substituted and will be a tire of equal price, quality and construction. A comparable tire may also have a different sidewall or tread configuration. If the purchaser requests a higher-priced replacement tire instead, the purchaser must pay the price difference for the “upgrade” after the appropriate prorated allowance has been deducted.

WARRANTY EXCLUSIONS AND LIMITATIONS (NON-ELIGIBLE)

The exclusions and limitations on the applicability of this limited warranty with

respect to defects in material, workmanship or design set forth in this section and other sections should be read carefully because they may determine whether you are entitled to a warranty replacement or a warranty replacement allowance. The limited warranty with respect to defects in material, workmanship or design provided for the MAXAM Medium Radial Truck tire you purchased does not apply if the tire failed because of any one of the following:

- tires installed on a vehicle registered or normally used outside the United States
- the tire was transferred to another vehicle after it was originally installed
- the tire is branded as “Blemish” or “NA” or the molded DOT number has been removed or disfigured
- the tire was repaired only with a self-vulcanizing plug, improper section repairs or in a manner that does not comply with U.S. Tire Manufacturers Association standards
- tire failures caused by road hazard, potholes, or collision damage
- vandalism, theft, off-road use, long-term improper storage or other abuse
- improper mounting procedures or applications
- over and under inflation, overloading, or failure to maintain proper tire pressure
- addition of liquids, solids or gases (other than air, nitrogen, carbon dioxide) such as sealers or balancing materials
- ozone or weather cracks or checking occurring four (4) years after the date of purchase or, if that proof is not available, four (4) years after the DOT serial date
- mechanical failures of the vehicle on which the tires was originally installed, improper alignment, or brake and shock failure of said vehicle
- the rim on which the tire is mounted is defective or fails
- tires with “irregular tread wear” (which is defined as a tread groove depth differences of 2/32nds of an inch or more on the same tire)
- tires submitted for ride disturbance complaints after 2/32” of tread wear or 12 months from date of purchase, whichever occurs first

NOTE: THIS WARRANTY GIVES YOU SPECIFIC RIGHTS, WHICH VARY FROM STATE TO STATE. SOME STATES DO NOT ALLOW THE EXCLUSION OR LIMITATION OF INCIDENTAL OR CONSEQUENTIAL DAMAGE OR HOW LONG AN IMPLIED

WARRANTY MAY LAST, SO CERTAIN LIMITATIONS OR EXCLUSIONS HEREIN MAY NOT APPLY TO YOU. HOWEVER, TO THE EXTENT PERMITTED BY THE LAWS OF YOUR STATE, MAXAM DISCLAIMS ALL WARRANTIES EXPRESS OR IMPLIED OTHER THAN THE WARRANTIES STATED IN THIS LIMITED WARRANTY, INCLUDING BUT NOT LIMITED TO THE IMPLIED WARRANTIES OF MERCHANTABILITY AND FITNESS FOR A PARTICULAR PURPOSE. ANY IMPLIED WARRANTY OF MERCHANTABILITY, FITNESS FOR A PARTICULAR PURPOSE OR OTHERWISE IS LIMITED IN DURATION AND EXPIRES WHEN THE TIRE'S USABLE TREAD IS EXHAUSTED AS SPECIFIED IN THIS LIMITED WARRANTY. TO THE EXTENT PERMITTED BY LAW, THIS WARRANTY DOES NOT COVER AND EXPRESSLY EXCLUDES ANY COVERAGE OR LIABILITY FOR PUNITIVE DAMAGES, FOR LOSS OF TIME, INCONVENIENCE, LOSS OF USE OF YOUR VEHICLE OR TIRE, LOST PROFITS, OR ANY OTHER INCIDENTAL OR CONSEQUENTIAL DAMAGES. THIS IS THE ONLY WARRANTY THAT APPLIES TO THE MAXAM MEDIUM TRUCK TIRES PURCHASED BY YOU AND SUPERSEDES AND REPLACES THE TERMS OF ANY PREVIOUS WARRANTY. NOTHING IN THIS LIMITED WARRANTY IS INTENDED TO BE A REPRESENTATION THAT TIRE FAILURES CANNOT OCCUR. MAXAM NEITHER ASSUMES NOR EXTENDS, NOR AUTHORIZES ANY OTHER PERSON OR ENTITY TO ASSUME OR EXTEND ON ITS BEHALF, ANY OTHER OR DIFFERENT WARRANTY OBLIGATION.

THIS LIMITED WARRANTY IS THE ENTIRE WARRANTY GIVEN BY MAXAM. - THE COMPLETE OBLIGATIONS ARE SET FORTH HEREIN. NO ONE HAS THE AUTHORITY TO IMPLY, SUGGEST, AGREE, REPRESENT, WARRANTY OR PROMISE ANYTHING CONTRARY TO THE TERMS OF THIS LIMITED WARRANTY.

OWNERS OBLIGATIONS

To make a claim under this Limited Warranty, you must present the warranted tire to an authorized MAXAM Medium Radial Truck Tire dealer for adjustment along with the following items: proof of purchase showing that you purchased the Tire and the vehicle on which the Tire was originally installed. Your original invoice when you purchased the Tire should contain this information. You are responsible for payment for any extra products, services, or upgrades, including any fees and taxes related thereto, that you request that are not covered by the Limited Warranty.

NOTES





MAXAM TIRE NORTH AMERICA INC.

300 Rosewood Drive, Suite 102
Danvers, MA 01923, USA
T:1-844-MAXAM-NA | F:978-560-0624

MAXAM INTERNATIONAL LIMITED Grosser

Hasenpfad 30
D-60598
Frankfurt am
Main, Germany

MAXAMTIRE.COM

v2025