

The **MX220V** all-position mixed service radial is engineered with a wear and cut-resistant tread compound, providing long-lasting performance for dump trucks even in severe conditions. Featuring a solid shoulder design to withstand lateral scrubbing and a deep tread depth, this tire enables superior durability and reliability.



DURABILITY



PERFORMANCE



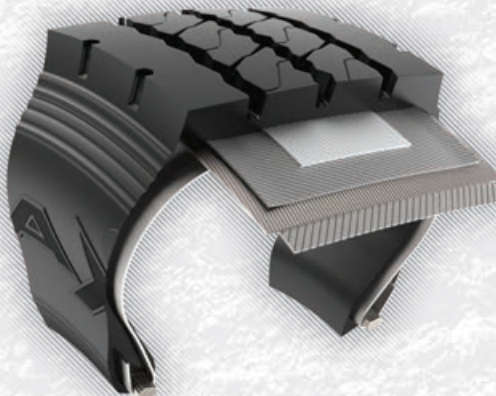
TRACTION



MX220V

MX220V FEATURES

- **SOLID SHOULDER DESIGN**
Withstands lateral scrubbing in severe conditions.
- **CUT AND WEAR RESISTANT COMPOUND**
Prevents tread damages, enabling maximum performance and durability.
- **STONE PROTECTION DESIGN**
Stone protection buttons prevent stone drilling, ensuring maximum tire life and belt protection.



UNMATCHED WET TRACTION FOR THE HIGHEST PERFORMANCE



MAXIMUM WEAR RESISTANCE FOR LONGEST TIRE LIFE



MINIMUM ROLLING RESISTANCE FOR OPTIMAL FUEL ECONOMY



SCAN TO LEARN MORE

STONE PROTECTION

Stone protection buttons within tread voids to safeguard against stone drilling, ensuring maximum tire life and belt protection.


CLOSED SHOULDER DESIGN

Withstands lateral scrubbing in severe conditions.

HEAVY-DUTY TREAD COMPOUND

Cut and wear-resistant compound prevents tread damage and cuts.


HEAVY-DUTY ALL-STEEL BELT PACKAGE

Heavy-duty steel belts to ensure maximum durability and excellent for retreading.

HEAVY-DUTY BEAD CONSTRUCTION

Ensures proper mounting and even pressure for maximum casing durability and life.

CODE	SIZE	LI	SR	PR	TD	RIM	OD	SW	SLR	LCC 1X	LCC 2X
V222000	11R22.5	146/143	M	16PR	24	8.25	41.9	11.0	19.3	6610@120	6005@120
V222001	W11R24.5	149/146	M	16PR	24	8.25	43.5	11.0	20.3	7160@120	6610@120
V222007	315/80R22.5	161/157	G	20PR	23	9.00	42.8	12.1	19.7	10200@130	9090@130
V222002	315/80R22.5	161/157	K	20PR	23	9.00	42.8	12.1	19.7	10200@130	9090@130