

The **MX320V** is MAXAM's mixed service drive tire, featuring a reinforced abrasion-resistant compound for maximum tire life and durability, along with an aggressive lug pattern for maximum traction, even in the toughest environment. With its reinforced abrasion-resistant compound, this tire boasts a low-rolling resistance and unrivaled performance with cut, chip, and abrasion-resistance.

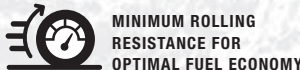
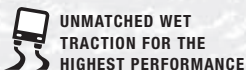
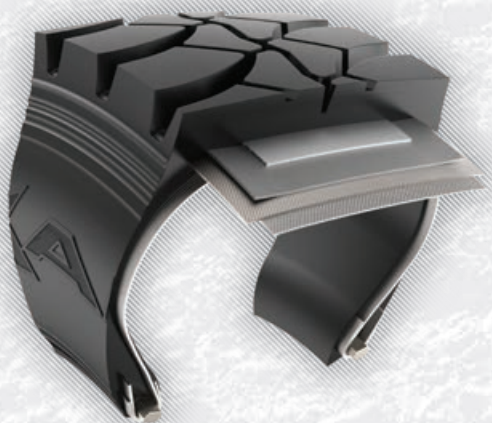
**MX320V**

- DURABILITY**
- TRACTION**
- LONG TREAD LIFE**



**MX320V FEATURES**

- **OPEN SHOULDER DESIGN**  
For enhanced traction for all weather surfaces.
- **ROBUST COMPOUND**  
Enhanced abrasion and cut resistance, maximizing durability and performance.
- **UNIQUE LUG PATTERN**  
Maximizes traction and wear performance for multiple surfaces.





**AGGRESSIVE LUG PATTERN WITH CENTER LUG DESIGN**

Delivers unparalleled traction, wear and handling in multiple surfaces.



**ROBUST TREAD COMPOUND**

Reinforced abrasion resistance in severe application against tread damage.

**EXTREME TRACTION ENHANCEMENT**

Open shoulder design provides maximum traction for all weather conditions.



**ENHANCED ALL-STEEL CASING**

Heavy-duty steel belts to ensure maximum durability and excellent for retreading.

**OPTIMIZED BEAD CONSTRUCTION**

Enables proper mounting and even pressure for maximum casing durability and life.

CODE	SIZE	LI	SR	PR	TD	RIM	OD	SW	SLR	LCC 1X	LCC 2X
V232000	11R22.5	146/143	K	16PR	30	8.25	41.9	11.0	19.3	6610@120	6005@120
V232001	11R24.5	149/146	K	16PR	30	8.25	43.5	11.0	20.3	7160@120	6610@120